

# COMBI PULLMAN HYGIENIC BARRIER WASHER



## Lapauw Pullman range covers any capacity demand

From **60kgs** up to **200kgs**. With this vast range, Lapauw offers a hygienic barrier solution for every customer, whether it's a private clinic or a large hospital laundry.

## 2-pocket and 3 pocket versions ► any type of application possible

The Lapauw Pullman range is available in 3 and 2 pocket versions, assuring you the best solution for any application. 3-pockets offers efficiency and ease for large flatwork like sheets. The 2-pocket drum provides private hospitals and health resorts the optimal solution to treat a wide range of items, from sheets to the residents private wash.

## Optimize the wash process with Flexi-speed

The Lapauw control system allows you to adjust and control the wash-, rinse and extraction speeds per program. This allows you to optimize the washing process with respect to the properties of the linen.

## Care free operation

The Pullman washer line is suspended by pneumatic shock absorbers, assuring a very stable and silent operation.

The drum bearings are mounted outside and separated from the outer drum, assuring maximum separation from the wetted areas.



## Specifications

	<b>C600</b>	<b>C800</b>	<b>C1100</b>	<b>C1600</b>	<b>C2000</b>
Loading capacity	60 kg (1/10)	80 kg (1/10)	110 kg (1/10)	160 kg (1/10)	200 kg (1/10)
# compartments	2	2	2/3	3	3
Drum volume	600 Liter	800 Liter	1100 Liter	1600 Liter	2000 Liter
Drum diameter	1080 mm	1080 mm	1080 mm	1350 mm	1350 mm
Drum Depth	660 mm	960 mm	1240 mm	1100 mm	1360 mm
Drum access	450 x 528 mm	650 x 528 mm	900 x 470 mm	900 x 470 mm	900 x 470 mm
Extract speed	750 RPM	750 RPM	750 RPM	610 RPM	610 RPM
G-factor	340	340	340	281	281
Single motor - with variable speed drive					
Motorpower	7,5 kW	11 kW	15 kW	30 kW	37 kW
Water inlet	2 x DN40 (6/4")	2 x DN40 (6/4")	2 x DN40 (6/4")	2 x DN50 (2")	2 x DN50 (2")
Steam inlet	1 x DN20 (3/4")	1 x DN20 (3/4")	1 x DN20 (3/4")	1 x DN32 (5/4")	1 x DN32 (5/4")
Compressed air inlet	1 x DN10 (3/8")	1 x DN10 (3/8")	1 x DN10 (3/8")	1 x DN10 (3/8")	1 x DN10 (3/8")
Drain diameter	102 mm (4,02")	102 mm (4,02")	102 mm (4,02")	200 mm (7,87")	200 mm (7,87")

### Supply voltage

3 x 380-420VAC 50HZ +PE + N / 3 x 440-480VAC 60HZ +PE + N

### Standard features

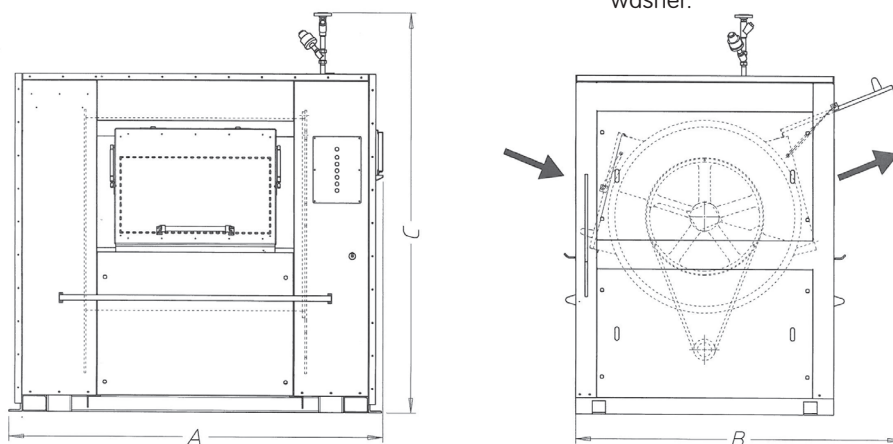
- Inner drum entirely in stainless steel - AISI304
- Outer drum entirely in stainless steel - AISI304
- All wetted parts in stainless steel – AISI 304
- Single motor , with variable speed drive
- Heating : direct steam injection in drum
- Automatic drum positioning system
- 4 product hoppers - tilting
- 1 connection plug for liquid detergents
- Microprocessor control with color LCD touch screen

### Options

- Additional water inlet valve
- Water flow meter
- Other supply voltages than standard
- Automatic weighing system

### Water recovery

Every Lapauw washer is already prepared for future water recuperation when it leaves the factory. Lapauw also offers an extended range of options, from a recuperation pump to connect to a central unit up to recuperation tanks, mounted on top of the washer.



	<b>C600</b>	<b>C800</b>	<b>C1100</b>	<b>C1600</b>	<b>C2000</b>
A [mm]	1640	1870	2250	2227	2487
B [mm]	1550	1550	1550	1746	1746
C [mm]	2410	2410	2410	2530	2455
weight [kgs]	1700	2000	2300	4500	4000

